



SAMUEL & SONS
FALL 2023





Dorset Ombré Tassel Fringe in Aquamarine

It's all in the Details

AT SAMUEL & SONS, our trimmings contribute to defining the details that enrich and elevate the lives and interiors in which they reside. In application, trim can create a scheme's focal point, redefine an edge condition, emphasize color, or accentuate the silhouette of furniture. Stylistically, color choices and textile pairings allow the very same border or fringe to traverse traditional, transitional, or contemporary schemes in a myriad of unique applications. It's about attention to detail, customization, and curating a story based on combining specific elements which in turn, create something extraordinary.

Adding to our unparalleled selection of beautifully crafted passementerie, this season, we are pleased to debut three distinct collections, inspiring you with endless possibilities to bring your vision to fruition.

Taos is a distinctive collection of artisanal passementerie with patterning and vivid color influences derived from the American Southwest. The Taos Collection features a series of borders with patterns ranging from kilims and ombré to more primitive geometrics borders. The majority of the trimmings in the collection incorporate a variety of embroidery stitching techniques, complex weaving, velvet and felt appliques, as well as an intricately braided cord with tape.

Dorset is a classical collection of passementerie composed of vintage-inspired borders, tonal fringes, and a scalloped velvet border in a repertoire of sophisticated hues. These trimmings are complemented by a tri-color strié blocked brush fringe, braided gimp, and an ornamental Velvet Scallop border. A stately 4" linen border depicting a beautiful botanical rendered with fine embroidery stitchwork completes this ensemble.

Sophie is a beautifully crafted, mercerized cotton collection of luxury basics composed of assorted fringes, cords, borders, and tiebacks in a palette of tonal shades. The collection pays homage to classicism in its pattern composition but its color palette enables it to become the perfect accent in more contemporary schemes for those seeking the excitement and intrigue of an eclectic narrative.





CONTENTS

Taos
6-11

The New Traditional
12-15

Dorset
16-21

This or That?
22-23

Sophie
24-29

**What Designers
Think About Bullion**
30-33

Gloriette
34-35

Sloane
36-37

Swiss Velvet
38-39

Leather & Faux Leather Piping
40-41

Technical Specs
42-47

Taos Collection

Taos is a distinctive collection of artisanal passementerie with regional patterning and vivid color influences derived from the American Southwest.



*Sedona Embroidered Border
in Painted Desert*



Taos Tasseled Border in White Sands



From top to bottom: Mojave Embroidered Border in Blue Sky, Horizon, White Sands, Cactus Bloom, and Piñon



From left to right: Corrales Appliqué Border in White Sands and Piñon





*From top to bottom: Taos Embroidered Border
and Taos Tasseled Border in Grand Canyon*

“Taos conveys an aesthetics that reflects respect for handcraft, heritage, and its cross section with modernism.”

-Marisa Gutmacher, VP Design Samuel & Sons



From top to bottom: Corrales Appliqué Border, Taos Embroidered Border and Mojave Embroidered Border in Piñon





The New Traditional

A celebration of traditional interiors, Jessica Kain Barton of J Kathryn Interiors looked to design legends such as Mario Buatta and Bunny Mellon to create her Southeastern Showhouse room. We spoke to the designer about her inspiration for the space and how she infuses modernity into classic interiors.

SAMUEL & SONS



Samuel & Sons: Can you walk us through the inspiration behind your Southeastern Showhouse room?

Jessica Kain Barton: My inspiration was the southern interiors I grew up surrounded by in Kentucky. Beautiful, exquisitely layered, and grounded in hosting. To accomplish that I revisited my favorite projects that were designed by my design icons. For example in this space, the layering of the same textile, window treatments, sofa & chairs is my nod to the late Mario Buatta, incorporating organic sweet details, textures, and art throughout honors Bunny Mellon, and the pièce de résistance, the feminine table skirt and drapery, is an ode to Deeda Blair.

S&S: How would you describe your personal style?

JKB: I am a traditionalist at my core because I am a Southern girl. However, I love the juxtaposition between a very traditional space that has a pop of contemporary through an element whether it be lighting or artwork. I love that tension in a space because it provides so much visual interest without feeling contrived or inauthentic.

S&S: What do you love about traditional interiors?

JKB: The warmth. Although they are layered with exquisitely beautiful elements such as drapery, upholstery, and wall coverings they are also centered in comfort and entertaining.





S&S: How do you make a traditional room feel fresh?

JKB: I started my design career in California, and my favorite design element from the west coast is the indoor/outdoor lifestyle. Granted, only some homes have that option, but you can achieve that feeling in any space. It's really about selecting products that bring the outdoors in, whether that be a paint color or wallcovering that envelops the scenery or textiles that mimic the foliage outside. We also love using a natural jute or sisal rug in traditional living spaces because we understand firsthand that traditional spaces get a reputation for feeling stuffy when they can actually be the most playful. To keep our spaces feeling fresh, we love to make sure that we incorporate those elements that make the space feel warm and beautiful without feeling overly serious.

S&S: What details set your work apart?

JKB: The details. I think through designing a pillow or lampshade with as much excitement as the initial plans for the kitchen, bathrooms, and floor plans. After the renovation is complete and the clients have moved into their home they will love those larger elements but it is the trim on the edge of the drapery or the pillows that will make them smile and feel completely at home.

S&S: How do you approach using passementerie in your work?

JKB: They are the finishing touch to every soft finish in the house. They bring a beautiful window treatment or cushion to life by elevating it because they are the perfect touch of bespoke that every soft furnishing needs.

S&S: What advice do you have for a designer who has never used trim before?

JKB: Do not be afraid or feel the need to follow any specific "rule". I love that the same type of trim can be used completely differently for a different project. I have used tape trim from the classic leading edge on a roman shade, to creating a design on a pillow, to a substitute for moldings in a room with few architectural elements. The potential for creating unique and beautiful designs is endless.



From top to bottom: Orsay Silk Tassel Fringe in Aqua Melange, 1.5" French Grosgrain Ribbon in Salmon

Dorset Collection

Dorset is a classical collection of passementerie composed of vintage-inspired borders, tonal fringes, and a scalloped velvet border in a repertoire of sophisticated hues.

*Dorset Tassel Fringe
in Aquamarine*





*From top to bottom: Dorset
Braided Border in Coral, Honey,
Aquamarine, and Oyster, Dorset
Tassel Fringe in Oyster*



*From top to bottom: Dorset Gimp in Honey,
Dorset Ombre Tassel Fringe in Honey*
LAMP SHADE **MUNDER & SONS**

“The Dorset collection combines varied tones of nuanced colors within classically-inspired patterning.”

-Marisa Gutmacher, VP Design Samuel & Sons

*From top to bottom: Dorset Cord
with Tape and Dorset Striped
Border in Aquamarine*





*Dorset Velvet Scallop in
Coral and Honey*

Dorset Velvet Scallop is an ornamental border that will fully transform the silhouette of drapery panels, pillows, and lampshades.



Dorset Velvet Scallop in Oyster

THIS *or* THAT?

**Traditional or contemporary?
Bold or subdued? The choice is yours.**

Adding trim to a patterned fabric might feel intimidating, but we find it's the best way to bring a print to life. Here, we transformed three pillows, in two ways, to show how a change of trim can make all the difference.

Which one would you choose?





Sophie Collection

Sophie is a beautifully crafted, mercerized cotton collection of luxury basics composed of assorted fringes, cords, borders, and tiebacks in a palette of tonal shades.



*From top to bottom: Sophie Tassel Tieback,
Sophie Brush Fringe, Sophie Cord with Tape,
and Sophie Bullion Fringe in Rose Water*
WALLCOVERING **DEDAR**



Sophie Tassel Tieback and Sophie Cable Holdback in Salt, Cream, Dove, Walnut, Dijon, Rose Water, Tulip, Currant, Glass, Wedgewood, Basil, and Viridian Green also available in Mineral see page 45

“Stylistically, Sophie pays homage to classicism in its pattern composition but its color palette enables it to become the perfect accent in more contemporary schemes for those seeking the excitement and intrigue of an eclectic narrative.”

-Marisa Gutmacher, VP Design Samuel & Sons



From top to bottom: Sophie Gimp in Dove, Sophie Brush Fringe in Cream, Dove, and Salt, Sophie Cable Holdback in Cream and Dove, 3/8" (10 mm) Sophie Cord with Tape in Salt, Sophie Tassel Fringe in Salt, Sophie Border in Salt





*Sophie Brush Fringe in
Cream, Dove, and Walnut*

What Designers Think of Bullion Fringe

According to these 6 designers, bullion is back. From swags to slipper chairs, read on to discover their favorite ways to use this enduring interiors staple.





RAYMAN BOOZER
Apartment 48

"Whether it's accentuating slipper chairs or sofas or adding a touch of elegance to curtains, fringe has a way of softening the overall aesthetic and creating a sense of warmth and comfort. It's like the perfect finishing touch that brings a room to life"



KATIE LOGAN LEBLANC AND JENSEN KILLEN
Logan Killen Interiors

"A classic detail, bullion fringe applied in just the right way can instantly update a piece, turning it from ordinary into something very special. It provides a character that often can't be achieved through other detailing. When in doubt, add fringe!"



NINA LITCHFIELD
Nina Litchfield Studio

"...They simply uplift any space and, when used in the right way, can be very glamorous and add important detailing to any project. Layers upon layers are what make an interior interesting with plenty of details for the eye to wonder! I love adding the bullion fringe to upholstery as they are simply timeless, chic and I would go as far to say "sexy"!"



BRITTANY BROMLEY
Brittany Bromley Interiors

"Playful yet sophisticated; bullion fringe can add a whimsical touch to a child's playroom, or bring the elegant finishing touches to a formal living room. Sometimes it's braided silk, others woven jute, solid or ombré- I've rarely met a bullion I didn't like!"



MILES REDD
Redd Kaihoi LLC

"I love the Edwardian splendor that bullion fringe adds to any room. I love it on the skirts of velvet, tufted upholstered sofas and dripping from the valances of rich swags and jabots. It always makes you feel like you are in the scene of *The Crown*."



KATIE ROSENFELD
Katie Rosenfeld & Co.

"My favorite bullion fringe to use is Samuel & Sons Bali Cotton Bullion Fringe. I use it on all kinds of upholstery; chairs, ottomans, sofas. I love how it has a nostalgic old school feel, but because it's cotton it feels fresh and casual."





Aspen Bullion Fringe



Loire Bullion Fringe



Aspen Bullion Fringe



Margaux Bullion Fringe



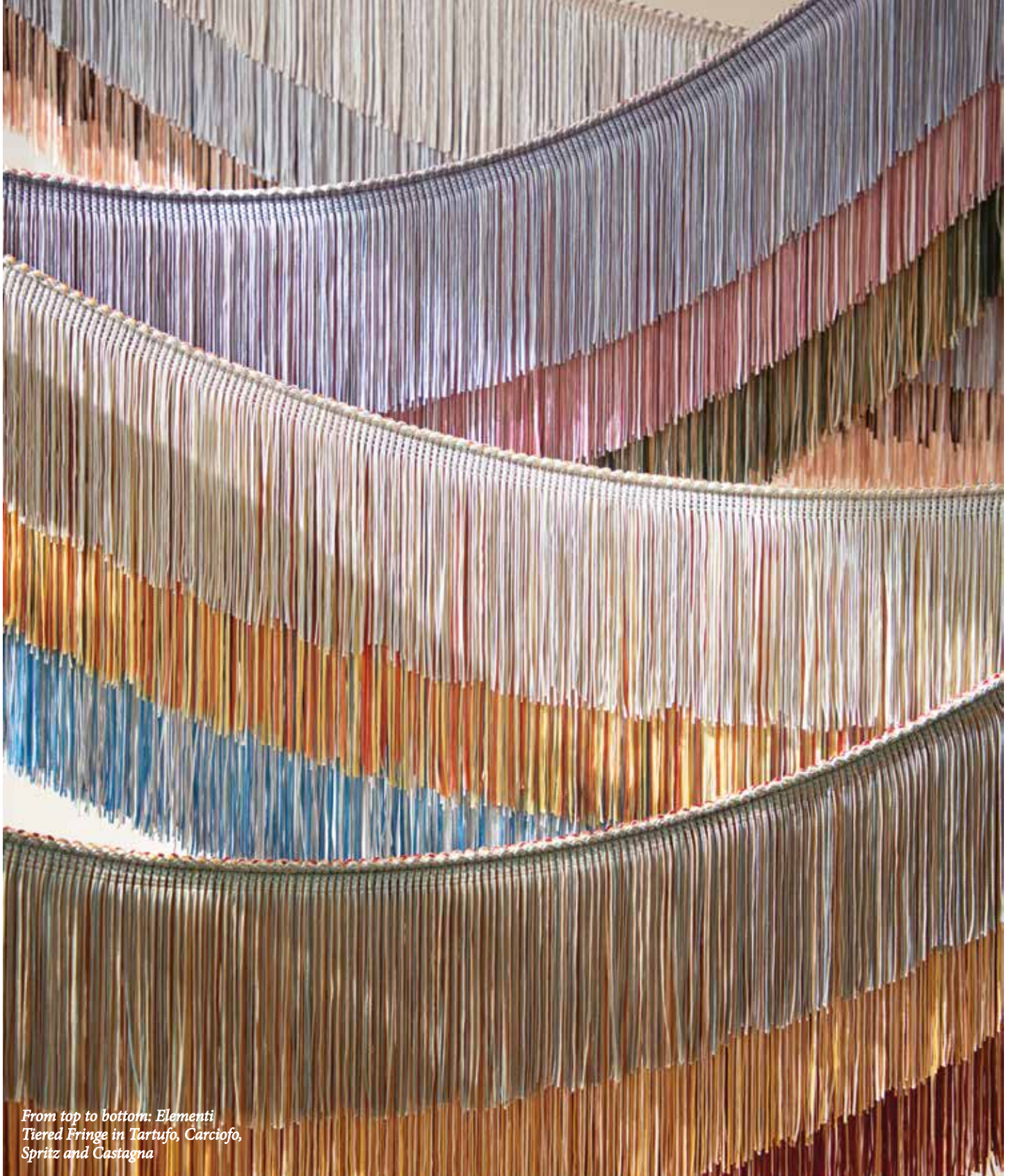
All About Bullion

We love bullion fringe for its classical look and unfussy nature. Crafted from rows of twisted branches that dangle from a decorative woven header, we offer it in every color and fiber under the sun. From sleek and skinny to round and bulky, short or long, bullion comes in all shapes and sizes, suited to projects far and wide. We adore it in modern and traditional interiors alike to add just enough decorative flair.

APPLICATION TIPS:

Feeling daring? Try using a colorful, bold bullion along the pleated header of a drape or down the edge of a pillow. Or choose our performance options which allow you to take bullion outside for use on an umbrella, on poolside upholstery, or to elevate an outdoor cabana.

Like the classics? Apply a silk bullion to the bottom edge of sofas and chairs for that traditional look.



*From top to bottom: Elementi,
Tiered Fringe in Tartufo, Carciofo,
Spritz and Castagna*

Gloriette Collection

Gloriette is a brilliant collection of passementerie inspired by the creative work of Scott Maddux and Jo leGleud of Maddux Creative.

SAMUEL & SONS
MADDUX CREATIVE



*From top to bottom: Fogli Cablate Embroidered Border
in Rosso, Punto Embroidered Border in Nera and Pietra,
Colonna Embroidered Border in Nera*

Aria Brush Fringe in Oro, 1" Sloane Velvet Border in Blush and Blossom and 2" Sloane Velvet Border in Pollen - Swiss Velvet Piping in Coral and Peacock - 1" Sloane Velvet Border in Fawn, Russet, Apricot and Rose and Swiss Velvet Piping in Plum - Swiss Velvet Piping in Wedgewood, 2" Sloane Velvet Border in Water - 1" Sloane Velvet Border in Pear and Basil and Swiss Velvet Piping in Olive and 3/16" Villa Performance Piping in Pearl





*From left to right: 1" Sloane Velvet
Border in Merlot, Russet and Rose*

SAMUEL & SONS **ESSENTIALS**
Sloane Collection

Second Edition

The collection expands our repertoire of luxurious, dense pile épinglé borders in two widths, through a broad selection of solid hues.



From left to right: Swiss Velvet Piping in Peacock, Oro and Ecu

SAMUEL & SONS **ESSENTIALS**
Swiss Velvet Piping

A collection of refined, dense pile velvet piping from Switzerland in a broad selection of shades.

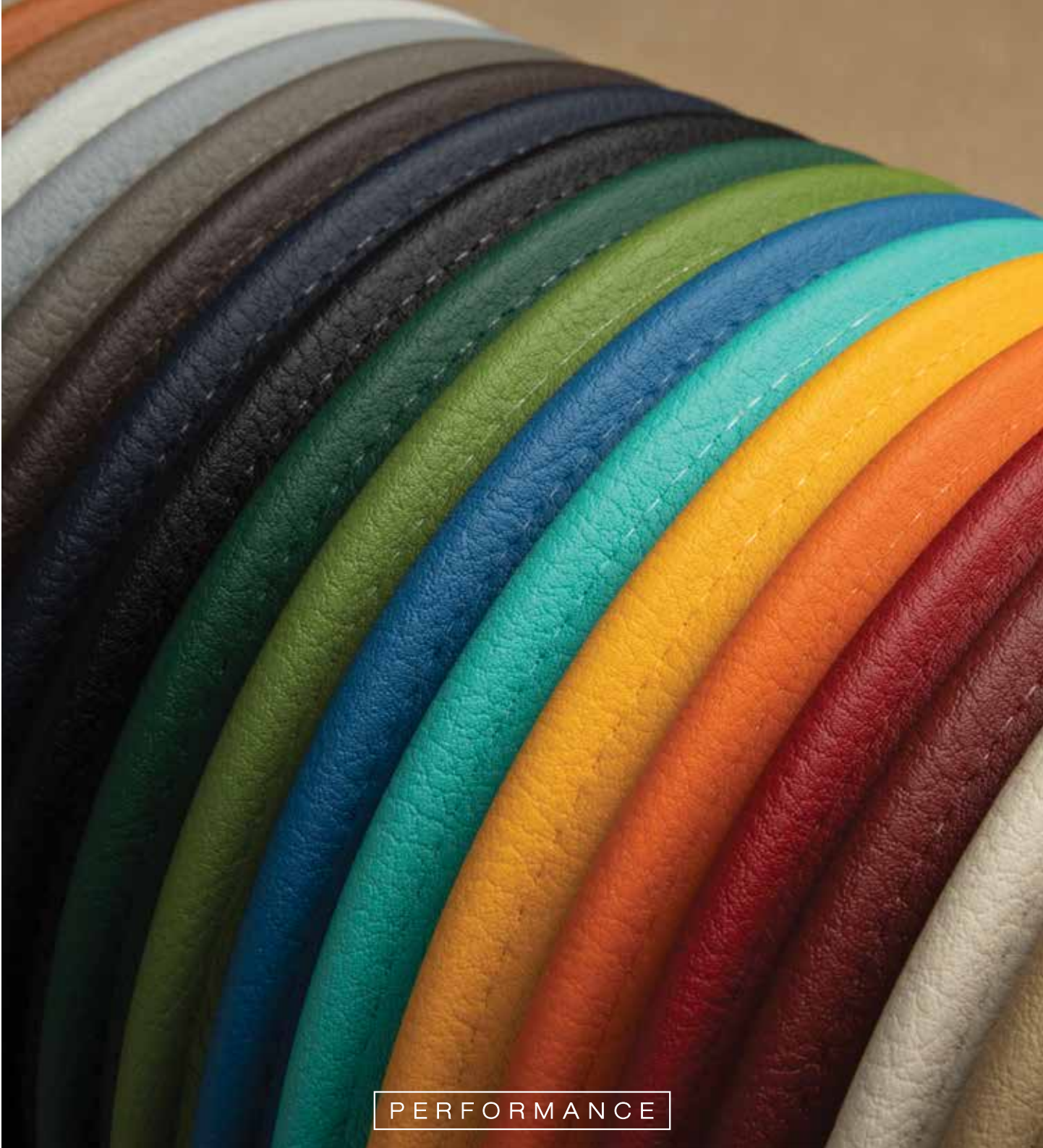


From top to bottom: Swiss Velvet Grosgrain Piping in Oro, and Swiss Velvet Piping in Peacock and Ecrú



Opposite Page:
From left to right: Villa Performance Piping in
Maple, Cappuccino, Fog, Slate, Onyx, Navy,
Jet, Emerald, Cilantro, Cobalt, Turquoise, Sun,
Tangerine, Lighthouse Red, Bordeaux, Pearl, Toffee

Shown Above: Villa Performance Piping in Turquoise



PERFORMANCE

SAMUEL & SONS ESSENTIALS
Leather & Faux Leather Piping

A comprehensive collection of sumptuous leather, nubuck, and faux leather piping, in a broad selection of shades and textures.



From top to bottom: Mojave Embroidered Border in Cactus Bloom, Abiquiú Embroidered Border in Cactus Bloom, Taos Cord with Tape in White Sands and Cactus Bloom, Taos Tasseled Border in Cactus Bloom



Taos Collection



CT-60643 1/2" (13 mm)
Taos Cord with Tape /
Câblé sur pied Taos
 48.8% CO, 34.9% SV, 10.4% PES,
 5.6% RY, 0.3% NY
Colours: Blue Sky, Cactus Bloom, Grand Canyon, Horizon, Painted Desert, Piñon, White Sands



BT-60637 2" (51 mm)
Mojave Embroidered Border /
Galon brodé Mojave
 Repeat / Raccord : 7.75" (19.5 cm)
 55% LI, 45% VI
Colours: Blue Sky, Cactus Bloom, Horizon, Piñon, White Sands



BT-60639 2" (51 mm)
Taos Embroidered Border /
Galon brodé Taos
 Repeat / Raccord : 3.5" (89 mm)
 50% LI, 50% VI
Colours: Blue Sky, Cactus Bloom, Grand Canyon, Horizon, Painted Desert, Piñon, White Sands



BT-60635 2.5" (64 mm)
Otero Embroidered Border /
Galon brodé Otero
 Repeat / Raccord : 2" (51 mm)
 100% VI
Colours: Cactus Bloom, Grand Canyon, Horizon, Painted Desert, Piñon, White Sands



BT-60638 2.75" (70 mm)
Abiquiú Embroidered Border /
Galon brodé Abiquiú
 Repeat / Raccord : 1.7" (43 mm)
 60% LI, 40% VI
Colours: Blue Sky, Cactus Bloom, Grand Canyon, Horizon, Painted Desert, Piñon, White Sands



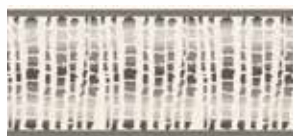
TF-60642 2.75" (70 mm)
Taos Tasseled Border /
Galon mèches Taos
 Repeat / Raccord : 3" (76 mm)
 94% SV, 3.8% RY, 2.2% PES
Colours: Blue Sky, Cactus Bloom, Grand Canyon, Horizon, Painted Desert, Piñon, White Sands



BT-60641 3" (76 mm)
Sedona Embroidered Border /
Galon brodé Sedona
 Repeat / Raccord : 5.15" (13 cm)
 50% LI, 50% VI
Colours: Blue Sky, Cactus Bloom, Grand Canyon, Horizon, Painted Desert, Piñon, White Sands



BT-60634 3" (76 mm)
Chimayó Embroidered Border /
Galon brodé Chimayó
 Repeat / Raccord : 1.5" (38 mm)
 50% CO, 40% LI, 10% VI
Colours: Blue Sky, Piñon, White Sands



BT-60636 3.5" (89 mm)
Cheyenne Ombré Border /
Galon ombré Cheyenne
 Repeat / Raccord : 2.5" (64 mm)
 100% VI
Colours: Blue Sky, Cactus Bloom, Grand Canyon, Horizon, Painted Desert, Piñon, White Sands



BT-60640 4" (10 cm)
Corrales Appliqué Border /
Galon d'application Corrales
 Repeat / Raccord : 1.5" (38 mm)
 65% CO, 25% PES, 10% VI
Colours: Midnight, Piñon, White Sands



Dorset Collection



CT-60651 1/4" (5 mm)
Dorset Cord with Tape /
Câblé sur pied
 43% CO, 43% LI, 14% PES
 Colours: Aquamarine, Coral, Honey,
 Leaf, Oyster, Porcelain



GB-60675 1/2" (13 mm)
Dorset Gimp /
Lezarde
 89% CO, 10% PES, 1% NY
 Colours: Aquamarine, Coral, Honey,
 Leaf, Oyster, Porcelain



BT-60656 1.5" (38 mm)
Dorset Velvet Scallop /
Galon velours
 Repeat / Raccord : 2.6" (66 mm)
 40% CO, 40% VI, 20% Spun PES
 Colours: Aquamarine, Coral, Honey,
 Leaf, Oyster, Porcelain



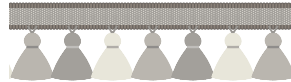
BR-60652 1.5" (38 mm)
Dorset Blocked Brush Fringe /
Marabout effilé
 Repeat / Raccord : 2" (51 mm)
 52% LI, 48% CO
 Colours: Aquamarine, Coral, Honey, Leaf,
 Oyster, Porcelain



BT-60649 1.5" (38 mm)
Dorset Botanical Border /
Galon botanique
 Repeat / Raccord : 3.25" (83 mm)
 58% PES, 42% CO
 Colours: Aquamarine, Coral, Honey,
 Leaf, Oyster, Porcelain



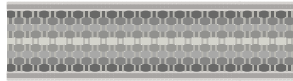
BT-60647 1.75" (44 mm)
Dorset Tweeded Border /
Galon tweed
 65% CO, 35% LI
 Colours: Aquamarine, Coral, Honey,
 Leaf, Oyster, Porcelain



TF-60653 2" (51 mm)
Dorset Ombré Tassel Fringe /
Frangè mèches ombrée
 Repeat / Raccord : 3" (76 mm)
 93% LI, 6% PES, 1% SV
 Colours: Aquamarine, Coral, Honey,
 Leaf, Oyster, Porcelain



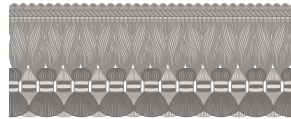
BT-60655 2" (51 mm)
Dorset Braided Border /
Galon tressé
 Repeat / Raccord : 1" (25 mm)
 75% LI, 25% VI
 Colours: Aquamarine, Coral, Honey,
 Leaf, Oyster, Porcelain



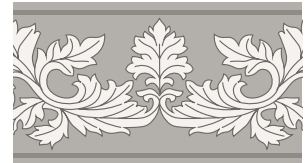
BT-60648 2" (51 mm)
Dorset Ombré Border /
Galon ombré
 55% PES, 45% CO
 Colours: Aquamarine, Coral, Honey,
 Leaf, Oyster, Porcelain



BT-60650 2.4" (60 mm)
Dorset Striped Border /
Galon rayé
 72% PES, 15% LI, 13% CO
 Colours: Aquamarine, Coral, Honey,
 Leaf, Oyster, Porcelain



TF-60654 3" (76 mm)
Dorset Tassel Fringe /
Frangè mèches
 Repeat / Raccord : 1" (25 mm)
 94% CO, 6% PES
 Colours: Aquamarine, Coral, Honey,
 Leaf, Oyster, Porcelain



BT-60657 4.2" (10.5 cm)
Dorset Embroidered Border /
Galon brodé
 Repeat / Raccord : 11.5" (29 cm)
 80% LI, 10% PC Foam, 10% Spun PES
 Colours: Oyster, Porcelain



Sophie Collection



CT-60670 1/4" (5 mm)
1/4" (5 mm) Sophie Cord with Tape /
1/4" (5 mm) Câblé sur pied
 78% CO, 21% PES, 1% NY
Colours: Basil, Cream, Currant, Dijon,
Dove, Glass, Mineral, Rose Water, Salt,
Tulip, Viridian Green, Walnut, Wedgewood



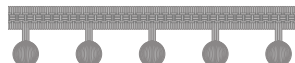
GB-60669 1/2" (13 mm)
Sophie Gimp /
Lézarde
 95% CO, 5% NY
Colours: Basil, Cream, Currant, Dijon,
Dove, Glass, Mineral, Rose Water, Salt,
Tulip, Viridian Green, Walnut, Wedgewood



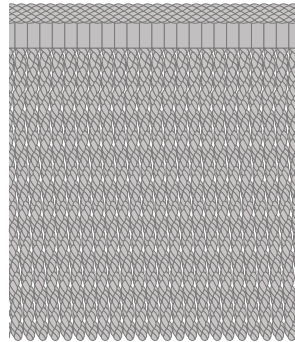
CT-60671 3/8" (10 mm)
3/8" (10 mm) Sophie Cord with Tape /
3/8" (10 mm) Câblé sur pied
 87% CO, 12% PES, 1% NY
Colours: Basil, Cream, Currant, Dijon,
Dove, Glass, Mineral, Rose Water, Salt,
Tulip, Viridian Green, Walnut, Wedgewood



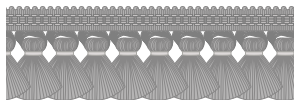
BR-60667 1.5" (38 mm)
Sophie Brush Fringe /
Marabout effilé
 97% CO, 2% PES, 1% NY
Colours: Basil, Cream, Currant, Dijon,
Dove, Glass, Mineral, Rose Water, Salt,
Tulip, Viridian Green, Walnut, Wedgewood



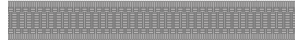
TF-60665 1.5" (38 mm)
Sophie Beaded Fringe /
Frangé perles
 Repeat / Raccord : 1.5" (38 mm)
 73% WD, 24% CO, 3% PES
Colours: Basil, Cream, Currant, Dijon,
Dove, Glass, Mineral, Rose Water, Salt,
Tulip, Viridian Green, Walnut, Wedgewood



BU-60666 8.25" (21 cm)
Sophie Bullion Fringe /
Frangé moulinée
 99% CO, 1% PC
Colours: Basil, Cream, Currant, Dijon,
Dove, Glass, Mineral, Rose Water, Salt,
Tulip, Viridian Green, Walnut, Wedgewood



TF-60663 2.3" (59 mm)
Sophie Tassel Fringe /
Frangé mèches
 98% CO, 2% PES
Colours: Basil, Cream, Currant, Dijon,
Dove, Glass, Mineral, Rose Water, Salt,
Tulip, Viridian Green, Walnut, Wedgewood



BT-60664 1" (25 mm)
Sophie Border /
Galon
 100% CO
Colours: Basil, Cream, Currant, Dijon,
Dove, Glass, Mineral, Rose Water, Salt,
Tulip, Viridian Green, Walnut, Wedgewood



HB-60668
Sophie Cable Holdback /
Embrasse câblé
 Spread: 39" (99 cm),
 Rope Diameter: 1.25" (32 mm)
 70% CO, 30% WD
Colours: Basil, Cream, Currant, Dijon,
Dove, Glass, Mineral, Rose Water, Salt,
Tulip, Viridian Green, Walnut, Wedgewood



TT-60672
Sophie Tassel Tieback /
Embrasse 1 gland
 Tassel Height: 11.6" (29.5 cm),
 Spread: 32" (82 cm)
 50% CO, 47% WD, 1% PES,
 1% PT, 1% ME
Colours: Basil, Cream, Currant, Dijon,
Dove, Glass, Mineral, Rose Water, Salt,
Tulip, Viridian Green, Walnut, Wedgewood



Gloriette Collection



CT-60468 7/16" (11 mm)
Elementi Cord with Tape /
Câblé sur pied Elementi
 100% AC
Colours: Carciofo, Castagna, Spritz, Tartufo



BT-60473 1.25" (32 mm)
Punto Embroidered Border /
Galon brodé Punto
 Repeat / Raccord : 1.25" (32 mm)
 90% LI, 10% Spun PES
Colours: Carrara, Nera, Pietra



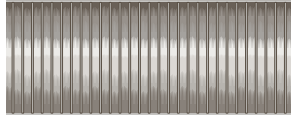
BT-60465 2.5" (64 mm)
Fogli Cablate Embroidered Border /
Galon brodé Fogli Cablate
 Repeat / Raccord : 4" (10 cm)
 50% LI, 50% Spun PES
Colours: Bianco, Rosso



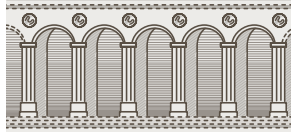
BT-60471 3" (76 mm)
Colonna Embroidered Border /
Galon brodé Colonna
 Repeat / Raccord : 2.55" (65 mm)
 90% LI, 10% Spun PES
Colours: Carrara, Nera, Pietra



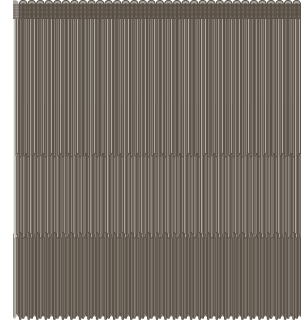
BT-60472 3" (76 mm)
Fogli Embroidered Border /
Galon brodé Fogli
 Repeat / Raccord : 2.75" (70 mm)
 54% CO, 36% LI, 10% VI
Colours: Carbone, Tutti Frutti



BT-60467 3" (76 mm)
Elementi Ombré Border /
Galon ombré Elementi
 60% CO, 40% VI
Colours: Carciofo, Castagna, Spritz, Tartufo



BT-60470 3.45" (87 mm)
Archi Embroidered Border /
Galon brodé Archi
 Repeat / Raccord : 2.5" (64 mm)
 90% LI, 10% Spun PES
Colours: Carrara, Nera, Pietra



FR-60469 8" (20.5 cm)
Elementi Tiered Fringe /
Frangé triple Elementi
 100% AC
Colours: Carciofo, Castagna, Spritz, Tartufo

SAMUEL & SONS
 MADDUX CREATIVE



Leather & Faux Leather Collection

981-56673 5/32" (4 mm)
Toscana Braid Leather Cord With Tape /
Câblé Sur Pied Tresse Cuir
 60% LH, 25% PES, 15% CO
 Colours : Black Bean, Buff, Cinnamon, Coal, Crimson, Hazelnut, Midnight, Oyster, Sorrel, Steel, Winter White

973-34243 5/32" (4 mm)
5/32" Italian Leather Piping
Passepoil Cuir 4 mm
 85% LH, 15% PES

Colours : Amazing Gray, Arctic White, Black Bean, Blue Black, Blush, Brandy, Brick, Brunello, Butterfield, Butternut, Cardboard, Caribbean, Cerulean, Chartreuse, Cobalt, Commodore, Coral, Dark Chocolate, Dark Khaki, Espresso, Eucalyptus, Evergreen, Forest, French Roast, Fuchsia, Garnet, Gibraltar, Glacier Bay, Granite, Gunmetal, Honeycomb, Hunt Club, Indigo, Ivory, Kilim Beige, Lichen, Limestone, Madeira, Melon, Metallic Gold, Metallic Silver, Morning Shadow, Moss, Nugget, Ocean, Onyx, Oyster Bay, Pale Tundra, Peacock, Pumpkin, Red Brown, Sage Green, Snow, Steel, Tangerine, Tiger Eye, Toast, Tomato Red, Topaz, Tradewind, Turquoise, Verde, Violet, Wet Sand, Whole Wheat, Wine, Zinfandel

973-34384 7/32" (5.5 mm)
7/32" Italian Leather Piping
Passepoil Cuir 5.5 mm
 70% LH, 30% PES

Colours : Amazing Gray, Arctic White, Black Bean, Blue Black, Blush, Brandy, Brick, Brunello, Butterfield, Butternut, Cardboard, Caribbean, Cerulean, Chartreuse, Cobalt, Commodore, Coral, Dark Chocolate, Dark Khaki, Espresso, Eucalyptus, Evergreen, Forest, French Roast, Fuchsia, Garnet, Gibraltar, Glacier Bay, Granite, Gunmetal, Honeycomb, Hunt Club, Indigo, Ivory, Kilim Beige, Lichen, Limestone, Madeira, Melon, Metallic Gold, Metallic Silver, Morning Shadow, Moss, Nugget, Ocean, Onyx, Oyster Bay, Pale Tundra, Peacock, Pumpkin, Red Brown, Sage Green, Snow, Steel, Tangerine, Tiger Eye, Toast, Tomato Red, Topaz, Tradewind, Turquoise, Verde, Violet, Wet Sand, Whole Wheat, Wine, Zinfandel

CT-58589 7/32" (5.6 mm)
Spirito Textured Piping
Passepoil Texturé Faux Cuir Spo
 75% PA, 25% PES

Colours : Cashew, Chamois, Cobalt Blue, Frost, Meadow, Merlot, Stone Taupe, Waterfall

981-56684 5/32" (4 mm)
Toscana Nubuck Piping
Passepoil Nubuck
 75% LH, 25% CO

Colours : Cafe, Cammello, Concrete, Graphite, Mushroom, Nero, Sable, Sandstone

CT-58584 5/16" (8 mm)
Solferino Vintage Leather Piping
Passepoil Cuir Vintage Solferi
 90% LH, 10% CO
 Colours : Cognac, Espresso, Greystone, Grigio, Noir, Sand, Tabak

CT-58585 5/32" (4 mm)
Loro Faux Leather Piping /
Passepoil Faux Cuir Loro
 90% PU, 10% PES
 Colours : Bark, Bordeaux, Indigo, Nerissimo, Oyster, Truffle

CT-60315 3/16" (5 mm)
Villa Performance Piping
Passepoil Outdoor / Indoor
 90% PVC, 10% PES
 Colours : Bordeaux, Cappuccino, Cilantro, Cobalt, Emerald, Fog, Gravel, Ivory, Jet, Lighthouse Red, Maple, Navy, Onyx, Pearl, Slate, Snow, Sun, Tangerine, Taupe, Toffee, Turquoise

PERFORMANCE

TECHNICAL SPECIFICATIONS

Surface Composition		100% PVC
Base Composition		100% PS
Tensile Strength	Warp	Weft
EN ISO 421	448 N 95%	334 N 157.1 %
Abrasion Test		>300,000
EN ISO 5470-2		
Permanent Creasing Behavior		PASS
DIN EN ISO 32100/DIN 53359 (Bally Test)		200,00 cycles
Color Fastness:		
Rubbing	Dry	Wet
EN ISO 105-X12	5	5
Artificial Light		
EN ISO 105-B02		
Exposure Level 7	>7	
Sea Water		
EN ISO 105-E02	5	
Chlorine Water		
EN ISO 105-E03	5	
Artificial Weathering		
EN ISO 105-B04	>7	

APPLICATIONS & FEATURES

Durability Performance:
 Abrasion Test >300,000 cycles (Heavy Use)

Resistance:
 UV/Fading (QUV 1000h)
 Hydrolysis (10 years)
 Cold Cracking (-23°C)

Anti-Bacterial and Anti-Mildew

Impermeability

Chemical Solvents-Free

Respects the Environment

Fire Proof Norms

BS 5852 Part 1-Cigarette + Match Test	PASS
EN 1021-1/2-Cigarette + Match Test	PASS
CA Tech. Bull. 117-Cigarette Test	PASS
FMVSS 302	PASS

CLEAN & CARE INSTRUCTIONS

Frequent washing may affect the performance of the article. Any stains, spills, or soiling should be cleaned up promptly with a neutral soap solution using a cloth in smooth circular motions. We do not accept responsibility for any damage resulting from inappropriate use or chemical cleaning.

Swiss Velvet Collection

CT-60316 1/4" (5 mm)
Swiss Velvet Grosgrain Piping
Passepoil velours gros grain Swiss
 62% PA; 38% PP
 Colours: Bark, Burgundy, Copper, Custard, Ecrú, Lapis, Olive, Onyx, Scarlet, Wedgewood

CT-57103 1/4" (5 mm)
Swiss Velvet Piping
Passepoil velours Swiss
 62% PA; 38% PP
 Colours: Bark, Bluebell, Blush, Bottle, Burgundy, Cafe, Charcoal, Cobalt, Copper, Coral, Crimson, Custard, Dove, Ecrú, Emerald, Fawn, Fuchsia, Graphite, Jonquil, Khaki, Kiwi, Lapis, Leaf, Magenta, Marigold, Mocha, Moss, Navy, Olive, Onyx, Oro, Peacock, Petal, Petrol, Pink, Plum, Royal Blue, Russet, Sand, Scarlet, Silver, Sky, Ultramarine, Wedgewood

Sloane Collection

BT-58055 1" (25 mm)
Sloane 1" Velvet Border
1" (25mm) Galon velours
 57% VI, 43% CO
 Colours: Alabaster, Amethyst, Apricot, Basil, Blossom, Blush, Copen, Fawn, Flint, Fog, Graphite, Juniper, Lemongrass, Marengo, Merlot, Navy, Oasis, Onyx, Oyster, Pear, Petrol, Pollen, Rose, Russet, Silver, Spearmint, Twilight, Water

BT-57692 2" (51 mm)
Sloane Velvet Border
Galon velours
 56% VI, 44% CO
 Colours: Alabaster, Amethyst, Apricot, Basil, Blossom, Blush, Copen, Fawn, Flint, Fog, Graphite, Juniper, Lemongrass, Marengo, Merlot, Navy, Oasis, Onyx, Oyster, Pear, Petrol, Pollen, Rose, Russet, Silver, Spearmint, Twilight, Water

SAMUEL & SONS
 ESSENTIALS



US 212.704.8000
UK/EUROPE +44 (0) 20.7351.5153
FRANCE +33 (1) 42.33.22.90
SAMUELANDSONS.COM

BE
OUR
GUEST

SAMUEL & SONS IS TRIM.

samuelandsons.com

